

WONDERGLASS

SENDO

# WONDERGLASS

EXHIBITIONS





- ▲ **Interaction** | Joana Vasconcelos | Fondazione Berengo's Art Space, Murano  
▷ **Il Grande Vetro di Francesco Vezzoli (After Lenor Fini)** | Francesco Vezzoli

*"Made in WonderGlass" presents SottoVetro, an exhibition curated by renowned art critic Jean Blanchaert within the prestigious surroundings of the Fondazione Berengo Art Space, in conjunction with the 59th Venice Biennale and the 2022 edition of Homo Faber. The word "sottovetro" translates to "under the glass", evoking the sense of seeing below the surface, of uncovering what is behind the presented work of art.*







*SottoVetro exhibition overview  
Luna Rossa by Andrea Anastasio  
Minosse C Table by studiopluz  
Éos by atelier oï*





▲ **Minosse** | studiopluz | Fondazione Berengo's Art Space, Murano

▷ **Melt Chandellier** | Nendo | Fondazione Berengo's Art Space, Murano

*Fondazione Berengo and WonderGlass announce a collaboration to showcase a unique exhibition of contemporary glass art and design titled GLASS to GLASS, opening to the public on 17th July 2021. United by their shared passion for revitalising contemporary glass the two companies will celebrate the vibrant community of contemporary artists and designers working with Murano glass today.*







9 TO 5 by Andrea Anastasio at  
Fondazione Berengo's Art Space,  
Murano





*Flow[T] by Nao Tamura and  
Berg tables by Jhon Pawson  
at Berengo Collection,  
Venice*





▲ **Aura by atelier oï** | Moitel | Switzerland

▷ **Éos by atelier oï** | Moitel | Switzerland

*WonderGlass in collaboration with atelier oï launches a new capsule Collection: Gaïa. This debut of atelier oï PRIVÉ is a series of objects designed to share a dynamic relationship with light, movement and harmony and was presented in an exclusive solo exhibition in Moitel, Switzerland.*







*Parhelia by atelier oi in the  
exhibition curated by the swiss trio  
launching Gaia Collection in Moitel,  
Switzerland*





▲ **Marea by atelier oï** | AB4.0 Gallery | Venice

▷ **Marea with atelier oï trio** | AB4.0 Gallery | Venice

*Designed by the Swiss transdisciplinary studio atelier oï, Marea mirrors the impression of light moving on water. Stacked suspended disks of clear glass feature radial micro grooving on the base, a pattern that when lit reflectively, creates a shimmering effect reminiscent of sparkling stars on water.*







*Marea by atelier oï installation at  
AB 4.0 Gallery in Murano during  
Venice Glass Week 2020.*





▲ **Floor Horizon** by John Pawson | AB4.0 Gallery | Venice

▷ **Chain Side Table** by Bethan Laura Wood | AB4.0 Gallery | Venice

*WonderGlass celebrates the resilience of the Venetian glass sector at The Venice Glass Week 2020, with London Venice: The Spirit of Resurgence an exhibition of new works by John Pawson, Industrial Facility, Ross Lovegrove, Tom Dixon and Bethan Laura Wood.*

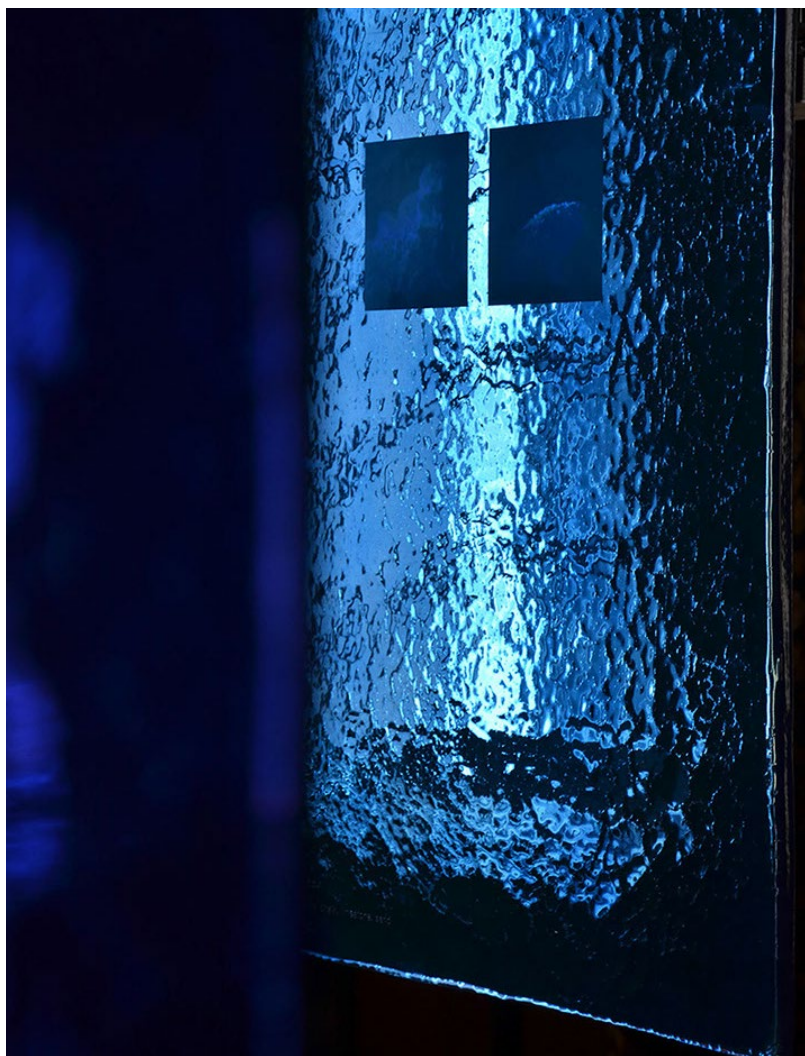






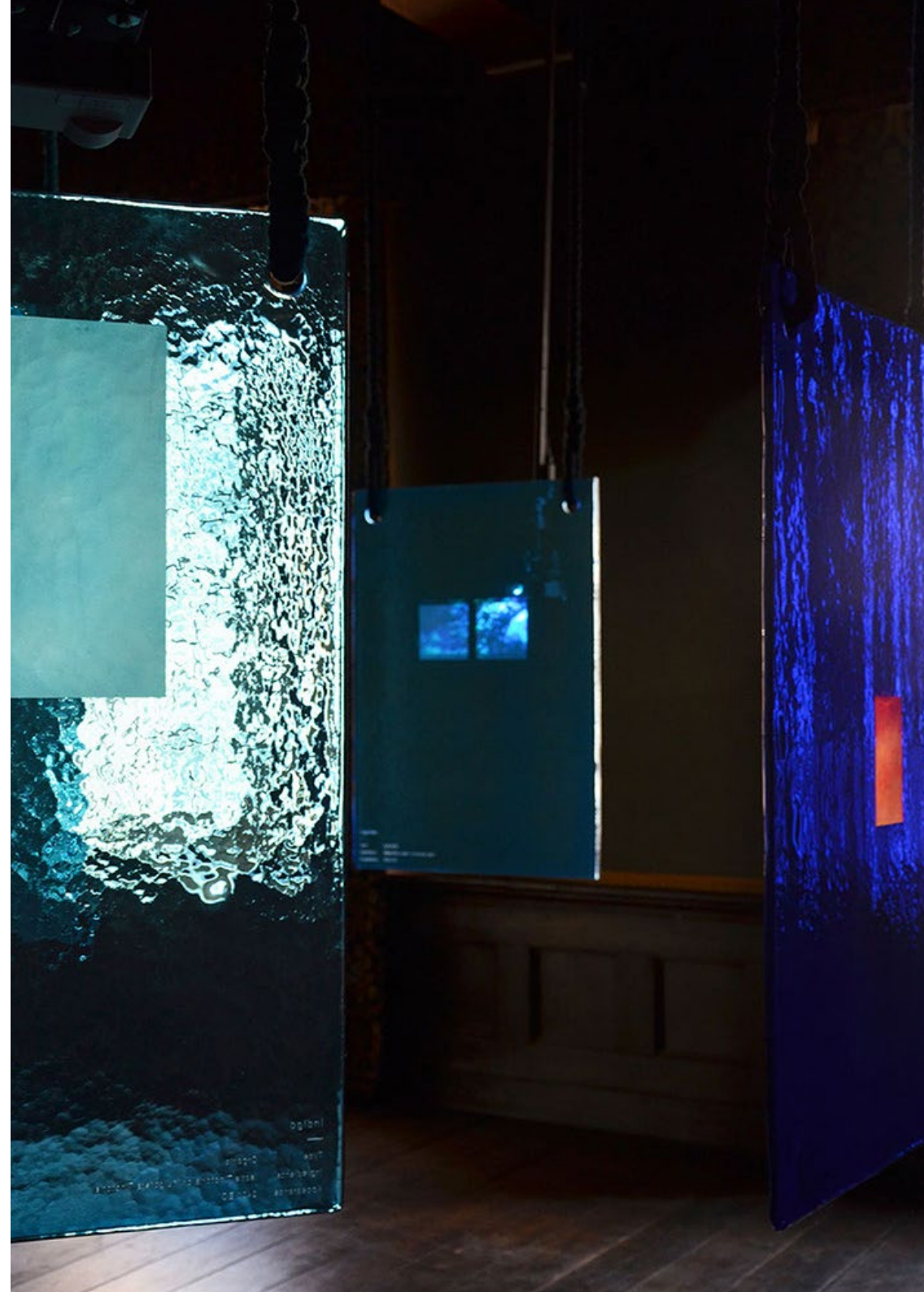
*View of The Spirit of Resurgence exhibition in AB 4.0 Gallery in Murano. From the left: Oneness by Ross Lovegrove, Slump by Tom Dixon and Horizon and Floor Horizon by John Pawson.*





- ▲ Exhibition Kleureyck Van Eyck's Colours in Design | Design Museum Gent
- ▷ Exhibition Kleureyck Van Eyck's Colours in Design | Design Museum Gent

*Vitrum installation, realised by WonderGlass in partnership with Studio Plastique, is designed to materialise the colour and significance of some of the most important moments in the history of blue. Similar to a painter's canvas, carefully crafted cast glass sheets are suspended to depict each portrait.*







*Vitrum installation by  
Studioplastique, exhibition view at  
Design Museum Gent in 2020.*





▲ **Minosse by studiopluz** | Park Armory | New York

▷ **Echoes by studiopluz** | Park Armory | New York

*Exploring the transformation of matter, sound, cosmic geometry and light, Dark Matter blends human sensibility, the future of craftsmanship and authentic design with the eternal mystery of our origins: the heart and wellspring of cosmic life.*







*Dark Matter exhibition view at  
The Salon Art + Design New York,  
featuring Minosse by studiopluz,  
Echoes by studiopluz and Memory  
Shield by Gwenael Nicolas.*





- ▲ **Obsidian Flow[T]** by Nao Tamura | Palazzo Soranzo Van Axel | Venice
- ▷ **Clover Chandelier and Pistil** by India Mahdavi | Palazzo Soranzo Van Axel | Venice

*During this years' collectable design and contemporary art show, Nomad, WonderGlass will launch two limited edition pieces, Clover and Pistil, created by Paris-based interior designer India Mahdavi along with a selection of limited edition iterations of classic works by Nao Tamura and Dan Yeffet.*







Exhibition view at Nomad Venice in 2019. From left to right: Lab Edition and Obsidian Flow[T] by Nao Tamura and Clover Chandelier and Pistil by India Mahdavi.





▲ **Melt Chaise Longue by nendo** | Istituto dei Ciechi | Milan

▷ **Melt by nendo** | Istituto dei Ciechi | Milan

*Shape of Gravity is an exhibition of works by nendo for WonderGlass, featuring Melt, a cast glass furniture and table top collection plus the launch of a new gravity formed chandelier.*







WONDERGLASS

nendo.

*Shape of Gravity exhibition view  
at Milan Design Week in 2019,  
launching Melt by nendo, whose  
intention was to create a collection  
where the material directs the  
design process.*





- ▲ **Melt by nendo** | 25Hours Hotel The Circle | Cologne
- ▷ **Melt by nendo** | 25Hours Hotel The Circle | Cologne

*As part of a special exhibition in honour of Japanese studio nendo receiving Architektur & Wohnen's Designer of the Year: 2019, 'Melt', designed by nendo for WonderGlass was previewed during IMM Cologne.*







*IMM Cologne exhibition view in 2019, where Melt collection was previewed and Oki Sato from nendo was awarded Designer of the Year by Architektur & Wohnen.*





- ▲ Christian Mussati with Horah by Raw Edges | WonderGlass Gallery | London
- ▷ Obsidian Flow[T] by Nao Tamura | WonderGlass Gallery | London

*WonderGlass opened the new headquarters in the design district of Fitzrovia, London featuring a gallery to showcase works and samples. The first installation is curated by Raw-Edges and feature their iconic work, Horah, along with other WonderGlass works making their UK debut.*







WONDERGLASS

OPENING WEEK

LONDON DESIGN FESTIVAL

17 - 21 SEPTEMBER 2018

#LDF18

Wonderglass.co.uk

WonderGlass Gallery in the district  
of Fitzrovia, London during London  
Design Festival in 2019.

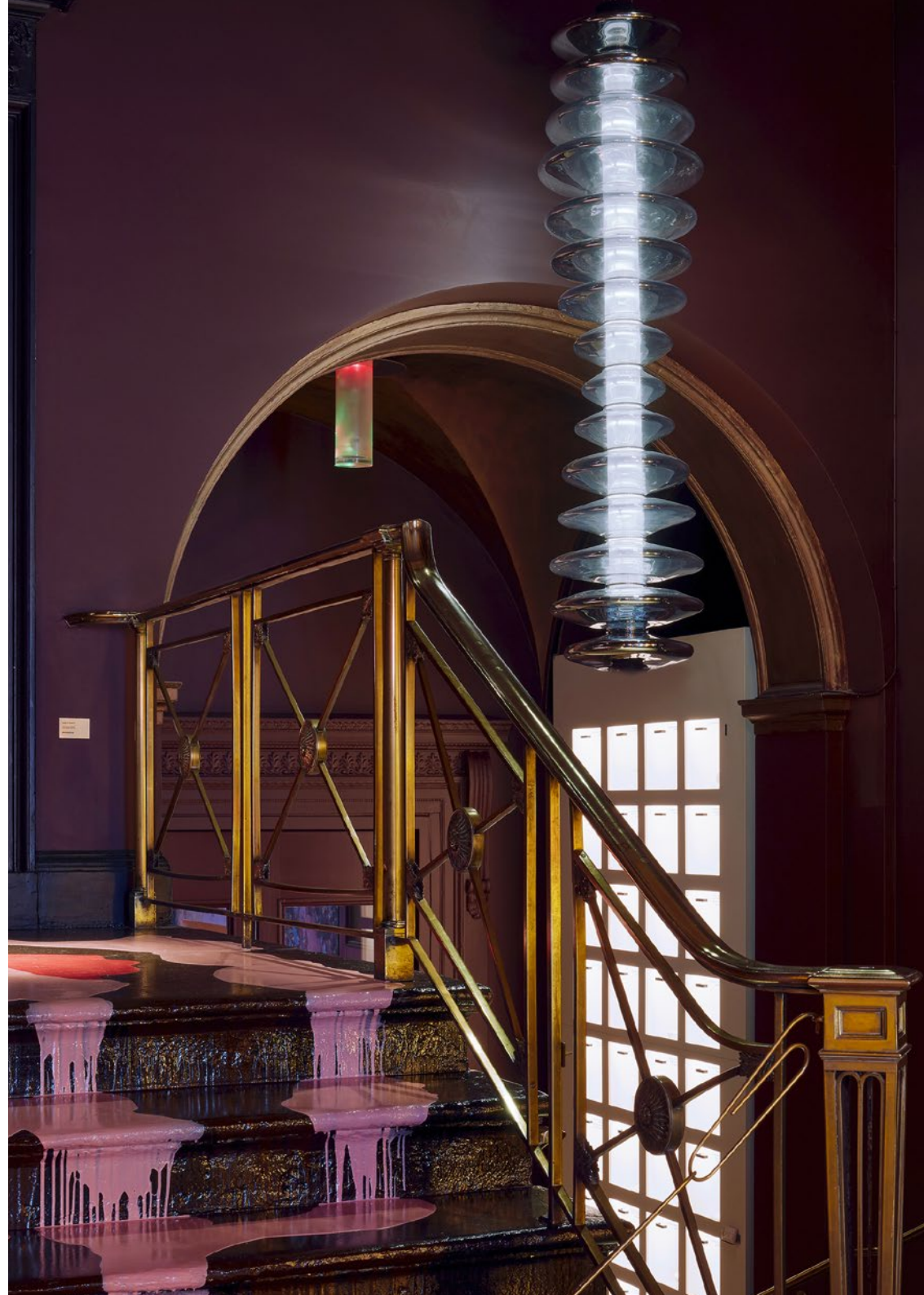




▲ Grappa by Claesson Koivisto Rune | King's Cross | London

▷ Echoes by studiopluz | Sketch | London

*WonderGlass products were part of Blown Away, a site-specific exhibit for London Design Festival curated by design research gallery Matter of Stuff and presented in iconic London venue Sketch. Matter of Stuff also curated a pop up store in King's Cross.*







Exhibition view in King's Cross, curated by Matter of Stuff in 2018. In the picture: Calliope by Marcel Wanders.





- ▲ Horah by Raw Edges | Church of Ospedaletto | Venice
- ▷ Kosmogonos Exhibition | Church of Ospedaletto | Venice

*"Kosmogonos" presented Echoes by studiopluz, Horah by Raw Edges and Urban Reflection. The exhibition created a world inspired by the wonders of the universe through the prism of glass.*







*Kosmogonos exhibition in 2018  
at Church of Ospedaletto, Venice,  
featuring Echoes by studiopluz.*





▲ **Through the Cloud by Fornasetti** | Istituto dei Ciechi | Milan

▷ **Hexagons floor** | Istituto dei Ciechi | Milan

At Salone del Mobile 2018 WonderGlass presented "Kosmos", a shimmering universe of glass featuring new collections Alcova, Through the Clouds, Echoes, Prism and Invisible Cities (Origins).







*Kosmos exhibition in 2018 at Istituto dei Ciechi, Milan. From the left: Echoes by studiopluz, Through the Clouds by Fornasetti and Alcova by Ronan and Erwan Bouroullec.*









▲ Horah by Raw Edges | Spazio Krizia | Milan

▷ Horah by Raw Edges | Spazio Krizia | Milan

*At Fuorisalone, Spazio Krizia hosted a reflection by Raw-Edges on the subject of light in dialogue with one of the essential aspects of contemporary living: conviviality.*







*Horah by Raw Edges at Spazio  
Krizia, a dynamic installation  
formed by crafted cast-glass  
lampshades.*





▲ **Hollow** by Dan Yeffet | Parc des Expositions de Villepinte | Paris

▷ **Calliope** by Marcel Wanders | Parc des Expositions de Villepinte

*Pushing the boundaries of creativity, surprise and imagination, the conceptual installation invited visitors to look beyond the light and view up close the capabilities of WonderGlass.*







*Cabinet of Curiosities exhibition view  
at Maison & Objet, Paris in 2018,  
featuring Hollow by Dan Yeffet.*





▲ **Lab Edition by Nao Tamura** | Istituto dei Ciechi | Milan

▷ **Calliope by Marcel Wanders** | Istituto dei Ciechi | Milan

*Calliope debuted as a sculptural new collection, gracefully creating spatial and versatile light installations when clustered or by itself. Also featured works by Nao Tamura, Zaha Hadid, Hideki Yoshimoto.*







*Between Time and Light* exhibition  
view at Istituto dei Ciechi, Milan in  
2018, featuring *Fluid* by Nao Tamura  
and *Calliope* by Marcel Wanders.





▲ **Luma by Zaha Hadid** | Parc des Expositions de Villepinte | Paris

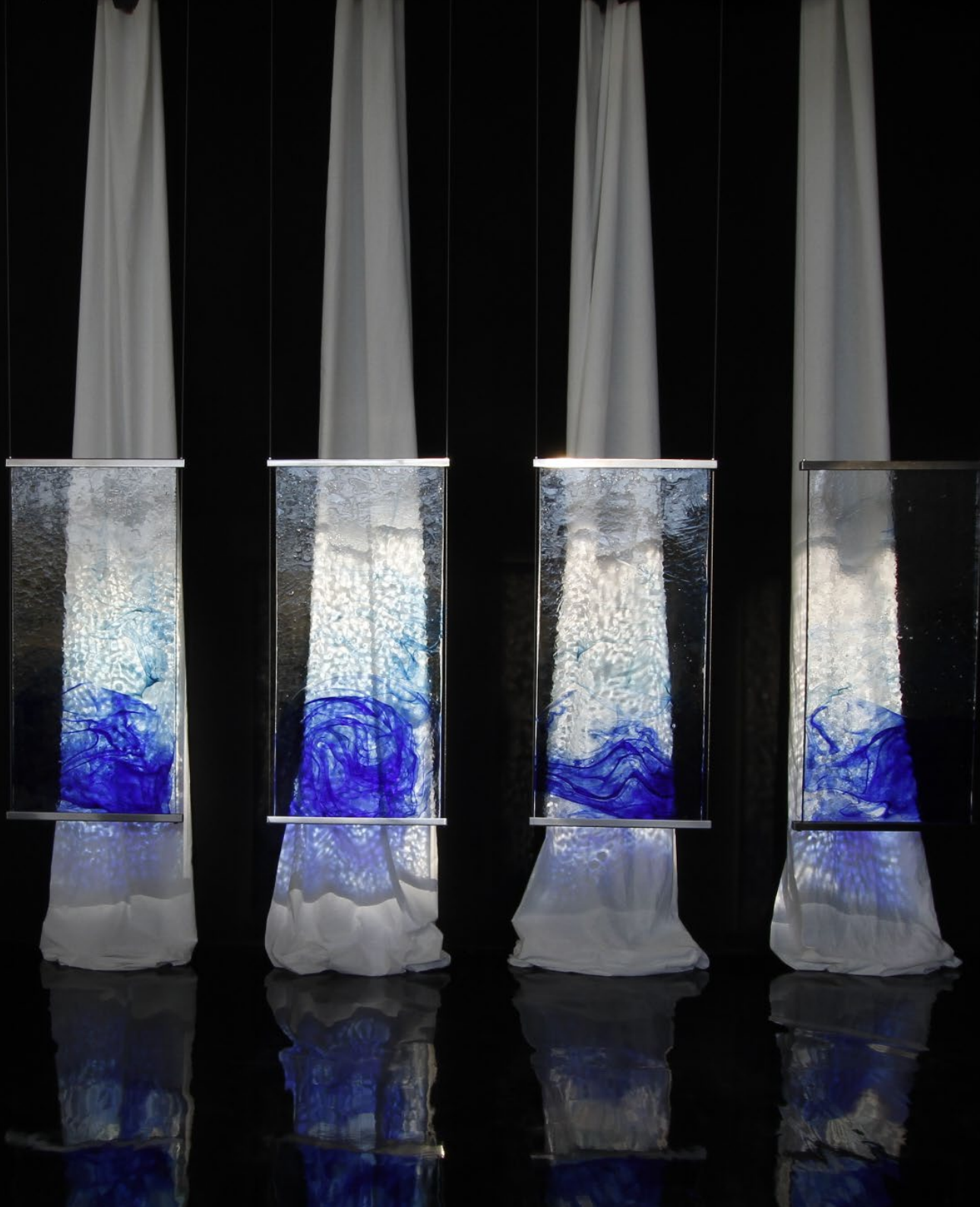
▷ **Rise by Hideki Yoshimoto** | Parc des Expositions de Villepinte | Paris

*Luma, Flow[T], Rise and Drift were brought front and centre for Paris' major design exhibition.*



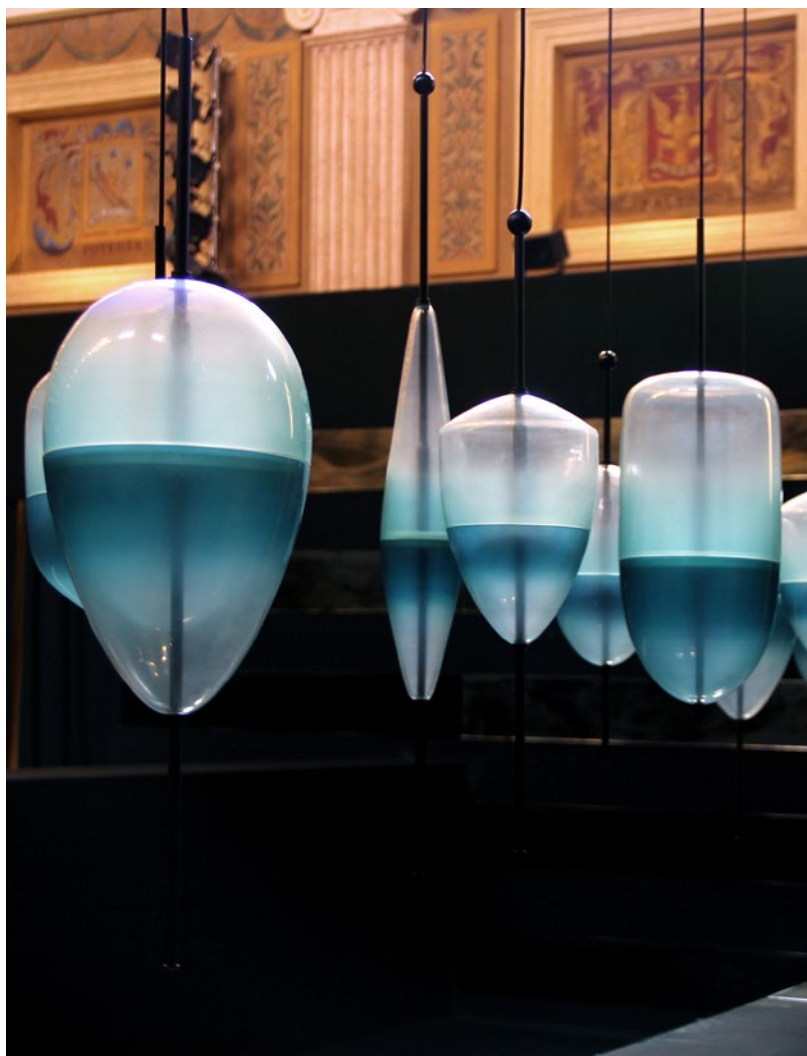


LASS



Exhibition view at Maison & Objet  
2017, featuring works by Hideki  
Yoshimoto: Rise and Drift.





▲ **Flow[T]** by Nao Tamura | Istituto dei Ciechi | Milan

▷ **Hollow** by Dan Yeffet | Istituto dei Ciechi | Milan

*"Luce e Materia" (Light and Matter) exhibition celebrated the perpetual order of simple elements, the essence of WonderGlass' creations. The artist, Nicola Magrin, added his own essence to the exhibition: ethereal watercolours inspired by WonderGlass' DNA.*







*Light and Matter exhibition view  
at Istituto dei Ciechi, Milan during  
Milan Design Week 2016. Featuring  
Hollow by Dan Yeffet.*





- ▲ **Momento by Nao Tamura** | Istituto dei Ciechi | Milan
- ▷ **Luma by Zaha Hadid first launch** | Istituto dei Ciechi | Milan

*Momento, interpreting an immediate dialogue between nature and technology, captures the very moment of a water-drop falling from a leaf. Swarm and Luma are born in Hadid Studio, which endorses the traditional techniques of glass craftsmanship to explore solutions for futuristic and stylish projects.*







Exhibition view at Milan Design Week  
in 2015. In the image, Swarm by  
Zaha Hadid installation crafted by  
WonderGlass for Established & Sons.





▲ **Grappa by Claesson Koivisto Rune** | Euroluce Fair | Milan

▷ **Calimero by Dan Yeffet** | Euroluce Fair | Milan

*Calimero is launched a surprising yet familiar chandelier by Dan Yeffet. This new concept looks towards the future and seduces with the reminiscence of a machinery a tribute to industrial lamps as well as luminous spheres from the past. Also featured at Euroluce are Grappa, Sleeve, Flow[T] and Masquerade.*







Exhibition view at Euroluce during Milan Design Week 2015, featuring Memento by Nao Tamura and Grappa by Claesson Koivisto Rune.



## EXHIBITIONS

**2021**

### **GLASS TO GLASS**

Group exhibition at Fondazione Berengo Art Space Murano  
and at Berengo Collection Venezia

**2020**

### **GAÏA**

Éos, Marea, Pharelia, Séléné, Aura by atelier of  
Moitel | Switzerland

### **VENICE GLASS WEEK / Marea**

Marea by atelier of  
AB 4.0 | Venice

### **VENICE GLASS WEEK / Spirit of Resurgence**

John Pawson, Industrial Facility, Ross Lovegrove,  
Tom Dixon and Bethan Laura Wood.  
AB 4.0 | Venice

### **DESIGN MUSEUM GENT / Vitrum**

Studio Plastique  
Exhibition Kleureyck Van Eyck's Colours in Design | Gent

**2019**

### **SALON ART + DESIGN / Dark Matter**

Gwenael Nicolas, studiopluz  
Park Avenue Armory | New York

### **NOMAD VENICE**

India Mahdavi, Nao Tamura and Dan Yeffet  
Palazzo Soranzo Van Axel | Venice

### **MILAN DESIGN WEEK / Shape Of Gravity**

Melt collection by nendo.  
Istituto dei Ciechi | Milan

**2018**

### **IMM COLOGNE / MeIt**

Architektur & Wohnen's Designer of the Year:2019  
Melt collection by nendo.  
25Hours Hotel The Circle | Cologne

### **LONDON DESIGN FESTIVAL**

Horah by Raw Edges, Nasse by Marco Zito & BTM, Rise by  
Hideki Yoshimoto, Night Flow[T] by Nao Tamura, Hollow by  
Dan Yeffet and Alcova by Ronan & Erwan Bouroullec.  
Orwell House | London

### **LONDON DESIGN FESTIVAL / Blown Away**

Echoes by studiopluz, Horah by Raw Edges and Rise  
by Hideki Yoshimoto  
Sketch | London

### **LONDON DESIGN FESTIVAL / Matter of Stuff**

Calliope by Marcel Wanders, Grappa by Claesson Koivisto  
Rune, Memento by Nao Tamura and Nendo by Komori.  
Kings Cross | London

### **THE VENICE GLASS VENICE**

Physalis by Cristina Celestino  
Fondaco Marcello | Venice

### **THE VENICE GLASS VENICE**

Nasse by Marco Zito and BTM  
Murano | Venice

### **VENICE BIENNALE ARCHITECTURE / Kosmogonos**

Alcova by Ronan & Erwan Bouroullec, Through the clouds Echoes by  
studiopluz, Horah by Raw-Edges.  
Church of Ospedaletto | Venice

### **MILAN DESIGN WEEK**

Horah by Raw-Edges.  
Spazio Krizia | Milan



## EXHIBITIONS

2017

### MILAN DESIGN WEEK / *Kosmos*

Alcova by Ronan & Erwan Bouroullec, Through the Clouds by Fornasetti,  
Echoes by studiopluz.  
Istituto dei Ciechi | Milan

### MAISON ET OBJET / *Cabinet of Curiosities*

Grappa by Claesson Koivisto Rune, Lab Edition by Nao Tamura,  
Calliope by Marcel Wanders, Hollow by Dan Yeffet, Drift by Hideki  
Yoshimoto.  
Paris Nord Villepinte | France

### MAISON ET OBJET

Oli by WOHA  
Nord Villepinte | Paris

### THE VENICE GLASS WEEK

Flow[T] by Nao Tamura, Komori by Nendo & Luma by  
Zaha Hadid.  
LUab Gallery | Murano

### MILAN DESIGN WEEK

Calliope by Marcel Wanders, Fluid by Nao Tamura & Rise and  
Drift by Hideki Yoshimoto.  
Istituto dei Ciechi | Milan

### MAISON ET OBJET

Rise and Drift by Hideki Yoshimoto, Flow[T] by Nao Tamura, Luma, by  
Zaha Hadid.  
Nord Villepinte | Paris

2016

### SEMPERING

Flow[T] by Nao Tamura  
MUDEC – Museum of Cultures | Milan

### GLASLOVE

Momento by Nao Tamura.  
Luminaire Lab | Miami

2015

### SPRING FORMS

Hollow by Dan Yeffet  
Mint Gallery | London

### PROGRESSLAND

Momento Edition by Nao Tamura  
Chamber Gallery | New York

### MILAN DESIGN WEEK / *Light and Matter*

Hollow by Dan Yeffet, Flow[T] by Nao Tamura,  
Watercolours by Nicola Magrin  
Istituto dei Ciechi | Milan

### MOMENTO SHOWCASE

Momento by Nao Tamura  
Gallery S. Bensimon | Paris

### MILAN DESIGN WEEK

Chelsea Boy by Michael Young  
Museo 900 | Milan

### MILAN DESIGN WEEK / *Momento, Luma, Swarm*

Momento and Flow[T] by Nao Tamura, Swarm & Luma  
by Zaha Hadid.  
Istituto dei Ciechi | Milan

### EUROLUCE

Grappa by Claesson Koivisto Rune, Sleeve by John Pawson,  
Flow[T] and Momento by Nao Tamura and Masquerade by Jaime  
Hayon, Swarm & Luma by Zaha Hadid.  
Euroluce Fair | Milan

2014

### HORIZON[T]

Flow[T] by Nao Tamura  
Palais de Tokyo Museum | Paris



## EXHIBITIONS

### FUORI SALONE

Grappa by Claesson Koivisto Rune, Sleeve by John Pawson,  
Luma by Zaha Hadid & Flow[T] by Nao Tamura.  
Istituto dei Ciechi | Milan

### MAISON ET OBJET

Flow[T] by Nao Tamura, Komori by Nendo & Masquerade  
by Jamie Hayon.  
Nord Villepinte | Paris

### REFLEXION

Flow[T] by Nao Tamura  
Gallery S. Bensimon | Paris

## 2013

### LONDON DESIGN FESTIVAL

Flow[T] by Nao Tamura  
Mint Gallery | London

### MILAN DESIGN WEEK

Flow[T] by Nao Tamura, Komori by Nendo, Masquerade by Jamie  
Hayon & Swarm by Zaha Hadid.  
Istituto dei Ciechi | Milan





WONDERGLASS

## **WONDERGLASS**

### *Gallery*

Orwell House  
16-18 Berners St  
London W1T 3LN  
United Kingdom

info@wonderglass.com  
wonderglass.com  
@wonderglassltd